

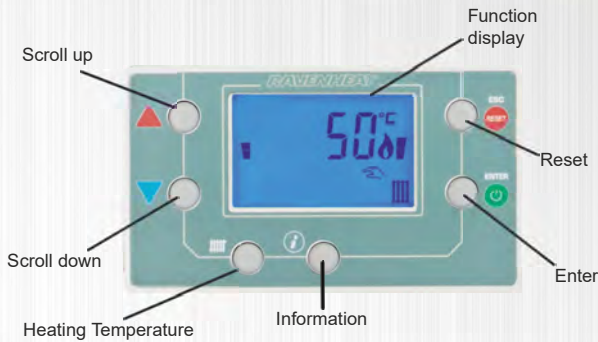
RAVENHEAT®



HE98S
SYSTEM
25kW
5 YEAR WARRANTY

Built to exacting ISO 9001 standards using quality components, carrying the European CE mark. Each appliance undergoes a rigorous testing and operating procedure before being carefully packed for maximum protection, ready to leave our factory.

- HE98S System Boiler - 25kW



CLEAR VIEW DISPLAY SCREEN

The HE98S System boiler has a high resolution backlit LCD screen, featuring customer friendly buttons for optimum operation, making it easy to use in poor light conditions. This feature enables the user to easily set the heating temperatures and view the system pressure.



Single coil stainless steel heat exchanger

The stainless steel single coil heat exchanger will ensure constant water speeds over a long life cycle, coupled with this being able to access the heat exchanger from the front facilitates ease of service through the life cycle of the boiler. The coil itself is designed to have wide water ways which lessens the likelihood of debris build up in the heat exchanger, the absence of manifolds lengthens the life expectancy of the heat exchanger by reducing the number of weld points and the number of seals.



Brass and copper manifold



Premium brass and copper with a Grundfos pump and SIT gas valve. Pull out and drop down control panel allows total access for servicing.

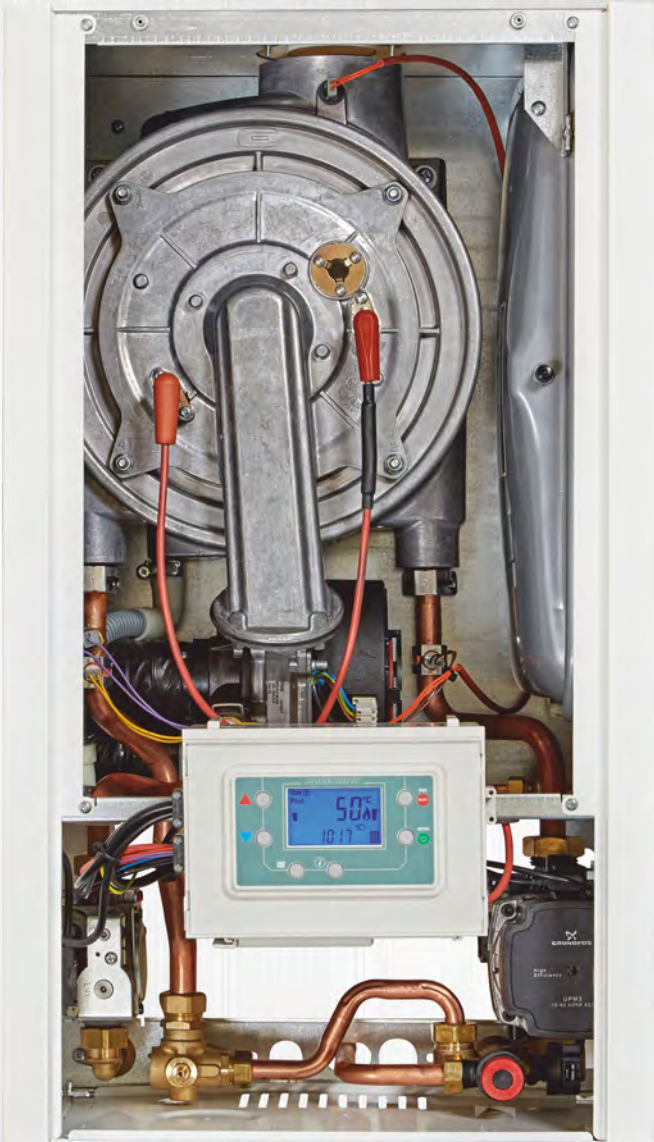


Customer benefits

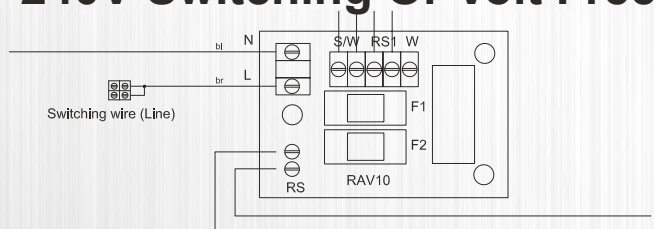
- SEDBUK A rated
- 5 year warranty
- OpenTherm compatible
- Compact size: H- 700mm, W- 400mm D- 300mm
- Fully ERP compliant
- Backlit LCD
- Whisper quiet in operation
- Built in frost protection
- Integral colour coded valve kit eliminates unsightly valves below the boiler
- High density insulation
- Minimum low power of only 3.7kW further reduces energy cost

Installer benefits

- Brass and premium branded components for lasting quality
- Stainless steel main heat exchanger
- Fully accessible from the front making service easier
- Side clearance of only 1mm required
- Easy release control panel allows easy access for servicing
- Built-in deep condensate trap designed to reduce external nuisance freezing in winter
- Multi fix wall hanging bracket available (optional)
- Flexible condensate pipe for multi positioning discharge drain
- Lightweight design to aid installation
- Removable side panels
- Built in automatic by-pass
- Low Nox class 6 - 36.06mg/kWh
- Anti-locking pump and valve feature
- Stand-off bracket available for piping down the back of the appliance (optional)



240V Switching Or Volt Free



Demand heat by using a basic switch live into the side of the PCB housing, or wire direct to the main PCB with volt free or OpenTherm.

OpenTherm (Compatible controls required)

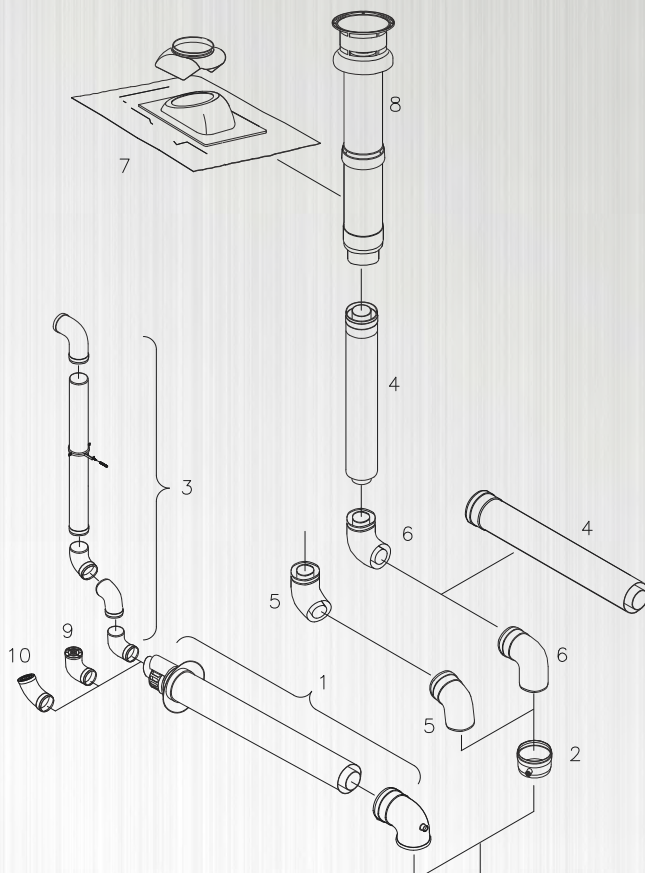
OpenTherm boilers provide more precise control directly from the room thermostat to the boiler's software which modulates the gas valve and central heating pump. This allows the precise gas input requirement to match the varying demand signal i.e. if the house needs to be one degree warmer the control tells the boiler it can start and run at a lower power. By reducing the flow temperature to a minimum of the heat required, the flow temperature is kept below the dew point (50°C), thus allowing the boiler to operate in condensing mode which is more efficient. Without OpenTherm even with the best controls the boiler will always run at full power consuming significantly more energy (both gas and electric) effecting the homeowner's energy bill. Whereas with our HE98S System by just applying the necessary heat there is a significant saving available and all of this is done automatically by the boiler and its controls.



Flue Options

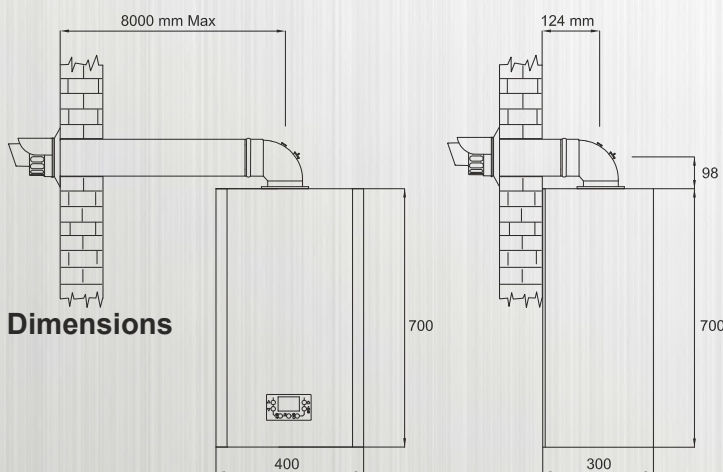
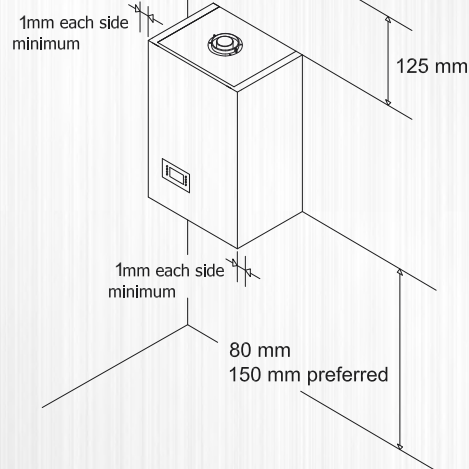
The new HE98S System can be fitted with either a 100mm standard (concentric), a 125mm flue duct or a twin (eccentric) flue duct, which can be installed either vertical or horizontal, depending on the customers requirement. A one metre standard horizontal flue kit is supplied separately; this can extend to 8 metres if required, or 13 metres vertical (maximum without bends). The below flue arrangements should fit most requirements however, alternative systems (Twin or 125mm) are available. See installation manual for all flue lengths and options.

No	Flue part 60/100	Part No
1	1 metre horizontal flue kit	TER160050
2	Straight flue header / sample point	COL160050
3	1 metre high plume kit	TER110101
4	1 metre flue extension	PRFE
5	45 degree in line flue bend	PR45FBI
6	90 degree in line flue bend	PR90FBI
7	Flashing sleeve / plate	TEG060050
8	1 metre vertical terminal	TER110200
9	90 degree flue exhaust deflection bend	CUR110100
10	45 degree flue exhaust deflection bend	CUR110050



BOILER SPECIFICATIONS	
Central Heating Max/Min Output (Adjustable Modulation)	3.7 - 26.4 kW
Expansion Vessel	8L
Maximum Central Heating Temperature	80°C
Installation clearances	
Side	1mm
Top	125mm
Bottom	80-150mm
Connections	
Gas	15mm
Heating Flow And Return	22mm
Condensate (push fit)	3/4"
Flue Connection	100mm
Electrical Mains Supply	230V 50HZ Fused 3amp
SAP 2005/2009	90.3 / 88.9%
Nox Class	6 (36.06 mg/kWh)
OpenTherm Compatible	Yes
Noise Level	52 Db
Auxiliary Electricity Consumption	
elmax at full load	0.045 kW
elmin at part load	0.017 kW
PSB in standby mode	0.005 kW

Clearances



Chartists Way, Morley, Leeds LS27 9ET

Tel: +44(0)113 252 7007 Fax: +44 (0) 113 238 0229

Website: www.ravenheat.co.uk Email: sales@ravenheat.co.uk

Ravenheat reserves the right to make changes and improvements in our products which may affect the accuracy of this information.